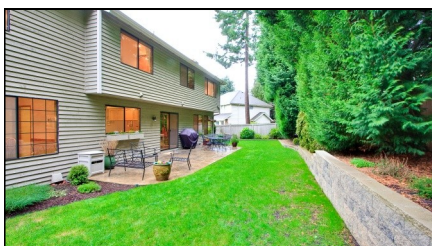


Redmond - English Hill - \$465,000



17420 NE 140th Pl, Redmond

Nestled in a quiet cul-de-sac in Coventry on English Hill, sits this charming Burnstead built, two story home. The gracious floorplan boasts 2040 s.f. and features 3 bedrooms, 2.25 baths plus den on a very private 7,497 s.f. lot! Many recent updates include - high quality roof, neutral paint, remodeled kitchen & baths! Sunken formal living room with vaulted ceilings & bay windows overlooking front yard. Spacious formal dining room with garden outlook. Remodeled kitchen with hardwood floors, new slab granite counters & stainless appliances. Attached nook with slider to rear yard. Relaxing family room with ample windows to rear yard & beautiful wood burning fireplace. Laundry room with storage - washer & dryer included. Updated powder room with granite counter. Light & bright loft/den - could easily be 4th bedroom! Wonderful master suite with walk-in-closet. The master bath has been remodeled and features large double vanity with granite counters & double shower with travertine tile. Two additional bedrooms upstairs are very spacious. The hall bath is oversized with updated granite counters, tile floors & tub surround. The very private rear yard features a stamped concrete patio, lush plantings, dedicated garden space & separate dog run with storage shed. Attached two car garage with workshop area & storage above. Outstanding North-shore schools - Sunrise Elem., Timbercrest Jr High & Woodinville High.

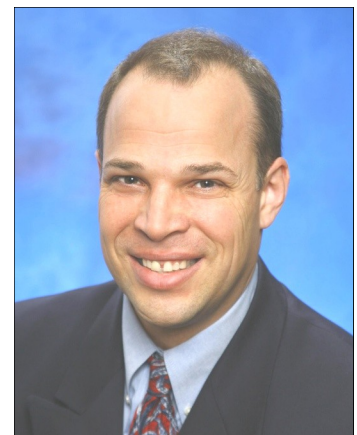
More photos & HD video online at EnglishHillTwoStory.com

Tony
M E I E R

Serving Buyers, Sellers and
Their Referrals Since 1989
EastsideHomes.com
(425) 466-1000

English Hill
online.com

Windermere
Windermere Real Estate/SCA, Inc.



** Buyer to verify square footage to own satisfaction